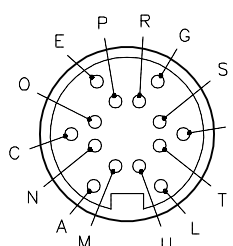
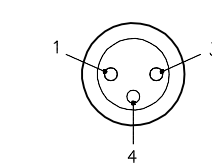

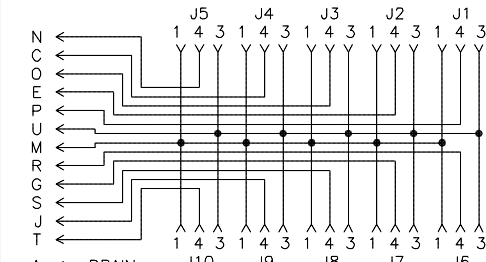
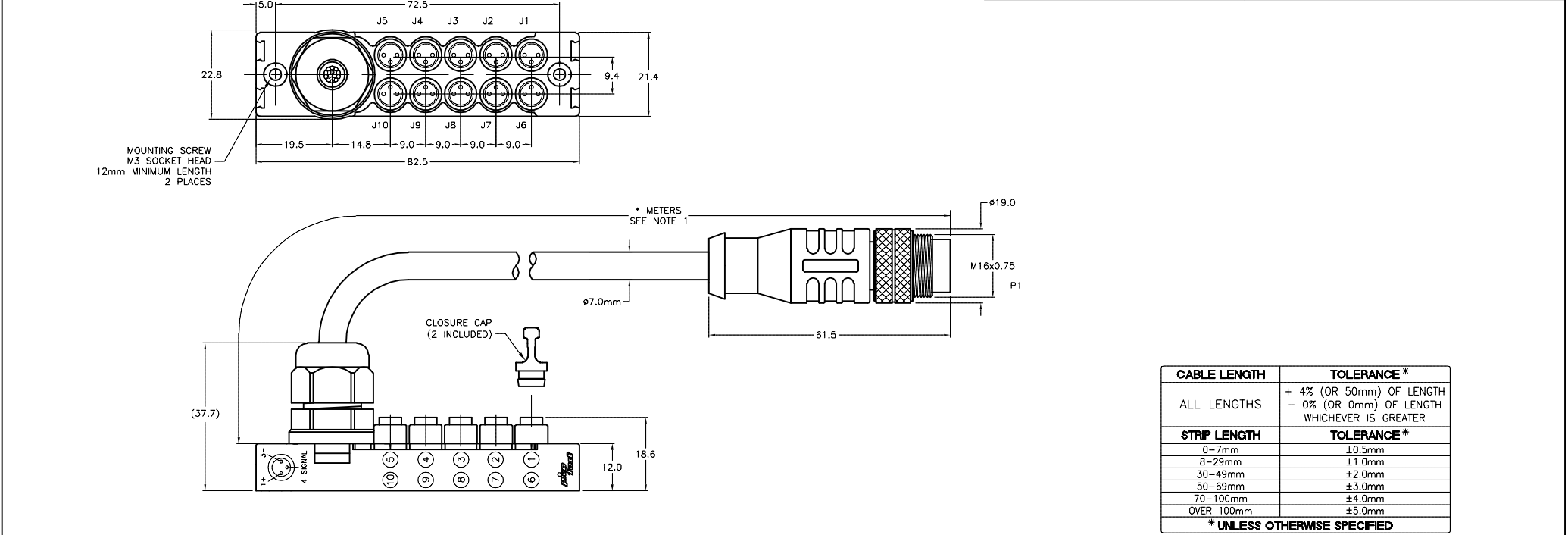


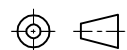
MALE PIN-OUT		CONNECTORS (J1-J10)	WIRING DIAGRAM	SPECIFICATIONS																						
<div><p>M16 connector</p></div>		<div> </div>	<div></div>	<table><tr><td>CABLE JACKET/COLOR</td><td>PVC/BLACK</td></tr><tr><td>NUMBER OF CONDUCTORS [AWG]</td><td>12x24 AWG, FOIL SHIELD, 26 AWG DRAIN</td></tr><tr><td>HOUSING MATERIAL/COLOR</td><td>PA 6 NYLON/BLACK</td></tr><tr><td>CONTACT CARRIER MATERIAL/COLOR</td><td>TPU/BLACK</td></tr><tr><td>CONTACT MATERIAL</td><td>BRASS/GOLD</td></tr><tr><td>OPERATING VOLTAGE</td><td>48 V AC/DC</td></tr><tr><td>OPERATING CURRENT</td><td>2 AMPS PER PORT, 2 AMPS TOTAL</td></tr><tr><td>COUPLING NUT MATERIAL (BSMK)</td><td>NYLON</td></tr><tr><td>MOLDED HEAD MATERIAL (BSMK)</td><td>TPU/BLACK</td></tr><tr><td>PROTECTION CLASS to DIN 40050</td><td>IP 67 – ONLY WHEN ALL RECEPTACLES ARE COVERED WITH PLUGS OR CONNECTED</td></tr><tr><td>OPERATING TEMPERATURE</td><td>-30°C to +80°C (-22°F to +176°F)</td></tr></table>	CABLE JACKET/COLOR	PVC/BLACK	NUMBER OF CONDUCTORS [AWG]	12x24 AWG, FOIL SHIELD, 26 AWG DRAIN	HOUSING MATERIAL/COLOR	PA 6 NYLON/BLACK	CONTACT CARRIER MATERIAL/COLOR	TPU/BLACK	CONTACT MATERIAL	BRASS/GOLD	OPERATING VOLTAGE	48 V AC/DC	OPERATING CURRENT	2 AMPS PER PORT, 2 AMPS TOTAL	COUPLING NUT MATERIAL (BSMK)	NYLON	MOLDED HEAD MATERIAL (BSMK)	TPU/BLACK	PROTECTION CLASS to DIN 40050	IP 67 – ONLY WHEN ALL RECEPTACLES ARE COVERED WITH PLUGS OR CONNECTED	OPERATING TEMPERATURE	-30°C to +80°C (-22°F to +176°F)
CABLE JACKET/COLOR	PVC/BLACK																									
NUMBER OF CONDUCTORS [AWG]	12x24 AWG, FOIL SHIELD, 26 AWG DRAIN																									
HOUSING MATERIAL/COLOR	PA 6 NYLON/BLACK																									
CONTACT CARRIER MATERIAL/COLOR	TPU/BLACK																									
CONTACT MATERIAL	BRASS/GOLD																									
OPERATING VOLTAGE	48 V AC/DC																									
OPERATING CURRENT	2 AMPS PER PORT, 2 AMPS TOTAL																									
COUPLING NUT MATERIAL (BSMK)	NYLON																									
MOLDED HEAD MATERIAL (BSMK)	TPU/BLACK																									
PROTECTION CLASS to DIN 40050	IP 67 – ONLY WHEN ALL RECEPTACLES ARE COVERED WITH PLUGS OR CONNECTED																									
OPERATING TEMPERATURE	-30°C to +80°C (-22°F to +176°F)																									



SOURCE DRAWING - FOR REFERENCE ONLY

- NOTES:
- "*" INDICATES CABLE LENGTH IN METERS. CONTACT TURCK TO ORDER SPECIFIC LENGTHS.
 - "/S653" DESIGNATES DRAIN WIRE CONNECTED TO PIN A.
 - "/S771" INDICATES MOLDED BLACK PLUG BODY.

E	UPDATE OPERATING CURRENT	RDS	02/01/18	63903
REV	DESCRIPTION	BY	DATE	ECO NO.

RELATED DOCUMENTS		3RD ANGLE PROJECTION		THIS DRAWING IS CONFIDENTIAL AND THE PROPERTY OF TURCK INC. USE OF THIS DOCUMENT WITHOUT WRITTEN PERMISSION IS PROHIBITED.		3000 CAMPUS DRIVE MINNEAPOLIS, MN 55441 1-800-544-7769 (763) 553-7300 (763) 553-0708 fax www.turck.us	
1. 2. 3. 4.				DRFT TH		DATE 05/04/05	
MATERIAL		SEE SPECIFICATIONS		APVD		SCALE 1=1.5	
FINISH		SEE SPECIFICATIONS		UNIT OF MEASUREMENT		DESCRIPTION VB 1003-*--BSMK 14/S653/S771	
		CONTACT TURCK FOR MORE INFORMATION		MILLIMETERS		IDENTIFICATION NO.	
				DO NOT SCALE THIS DRAWING		REV E	
						FILE: 777006661	
						SHEET 1 OF 1	